



PURPOSE
BUILT
SCHOOLS
ATLANTA



***PROGRESS
WITH PURPOSE***

MEASURING *OUR PROGRESS*

Dear friends of Purpose Built Schools,

The 2021-22 school year was the fourth full year of operating a PreK-12th grade feeder pattern of schools under the PBSA-APS partnership. After four years of operating this full PreK - 12 pipeline, it is clear our schools are vastly improved.

The APS-PBSA partnership has resulted in **strong student growth, more stable schools with student-centered cultures and increased caregiver engagement, and unprecedented equity-based investments.**

Last year, which included the end of the 2021-22 school year and the start of the 2022-23 school year, was an eventful and challenging year for PBSA:

- 2022 started with the unexpected condemnation of Forest Cove apartments. Much of the year was devoted to successfully relocating 217 Forest Cove families and planning for the closing of THES in May – after 6 years of progress under PBSA.
- The Georgia Milestones results for SY22 – the first valid state tests in 3 years – highlighted the unequal impact of pandemic on student academic outcomes, as hard-earned gains over the last four years were wiped out. The results underscored the need to focus on recovery for the next several years.

Yet, there were many signs of progress and hope.

This report looks both at an eventful and challenging 2022, but also reviews four years of impact of PBSA operating a PreK – 12 network of schools.

With gratitude,

Greg Giornelli
President
Purpose Built Schools Atlanta



**STRONG
STUDENT
GROWTH**



**IMPROVED
SCHOOL
STABILITY**



**UNPRECEDENTED
EQUITY-BASED
SUPPORT**



**STRONG
STUDENT
GROWTH**

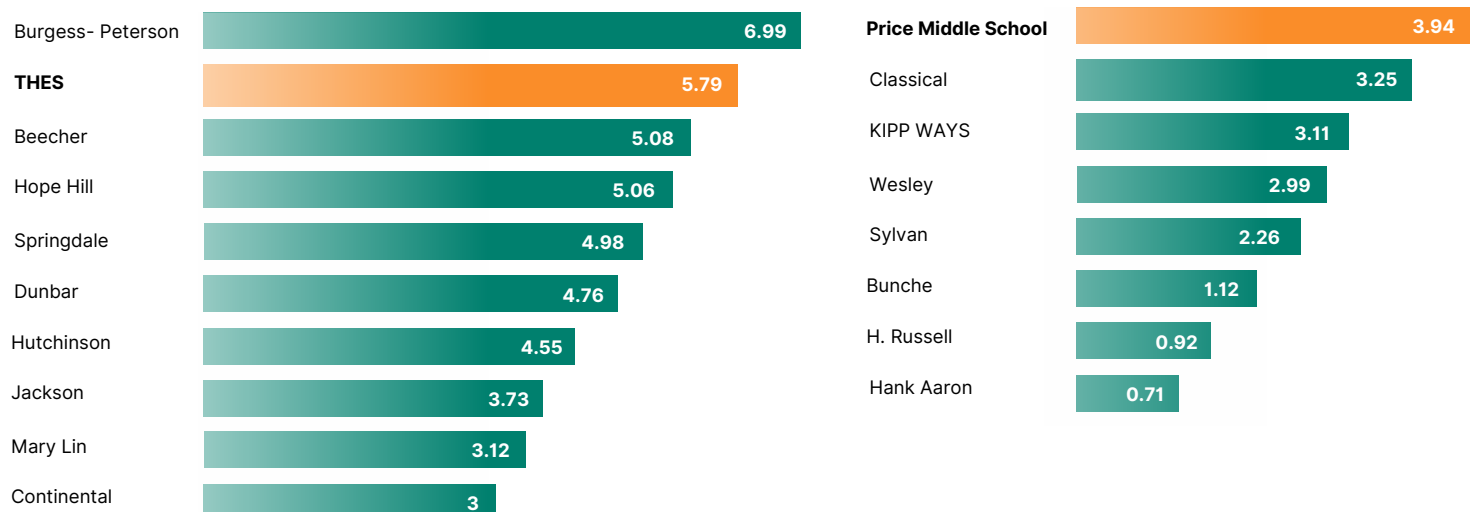
STRONG GAINS IN THE *APS CHALLENGE INDEX*

STUDENT ACHIEVEMENT

Research shows that one of the biggest predictors of students' academic outcomes on standardized test scores is income. The **APS Challenge Index** measures schools' ability to "beat the odds" based on their student demographics. For the first time in more than six years, Thomasville Heights Elementary School and Price Middle School outperformed schools with similar income levels.

From SY16-SY22, Thomasville Heights Elementary School made the second largest gain on the Challenge Index of any APS elementary school based on math and ELA scores.

From SY17-SY22, Price Middle School made the largest gain on the Challenge Index of any APS middle school based on math and ELA scores.





**STRONG
STUDENT
GROWTH**

COLLEGE & CAREER READINESS

GAINS IN GRADUATION RATE

Carver STEAM Academy has increased its graduation rate by 10.3 percentage points in the four years since APS partnered with Purpose Built Schools Atlanta to run Carver STEAM. This is the largest improvement in graduation rate of any other high school in the district over this four-year period (2018-2022).

graduation rate
increased by

10.3
percentage points

MORE SCHOLARSHIPS

Carver STEAM Academy's Class of 2022 earned more than \$4.5 million in scholarships for continuing education—a school record.

\$4.5M
in scholarships for Class of '22

SKILL DEVELOPMENT

Carver STEAM Academy is the only high school in Atlanta to offer P-TECH Carver STEAM, a free multi-year program from IBM that equips students with a degree from Atlanta Technical College and the technical skills needed to get their dream careers right out of school.

\$3.5M
in scholarships for Class of '23
- and counting!



**STRONG
STUDENT
GROWTH**

GEORGIA MILESTONES

GROWTH EVERY YEAR

Despite the pandemic that disproportionately impacted low-income families, working for six years in Georgia's lowest-income feeder pattern, 3 of our 4 schools have achieved net gains in student achievement on Georgia Milestones (Developing and Above).



**5TH MOST
IMPROVED**

APS elementary school



**5TH MOST
IMPROVED**

APS elementary school



**5TH MOST
IMPROVED**

APS middle school



**7TH MOST
IMPROVED**

APS middle school



CARVER STEAM



**1ST MOST
IMPROVED**

APS high school



**3RD MOST
IMPROVED**

APS high school



**3RD MOST
IMPROVED**

APS high school

SY17 – SY22: Rank based on 51
APS elementary schools

SY18-22: Rank based on 21 APS
middle schools

SY19-SY22: Rank based on 16
APS high schools



**IMPROVED
SCHOOL
STABILITY**

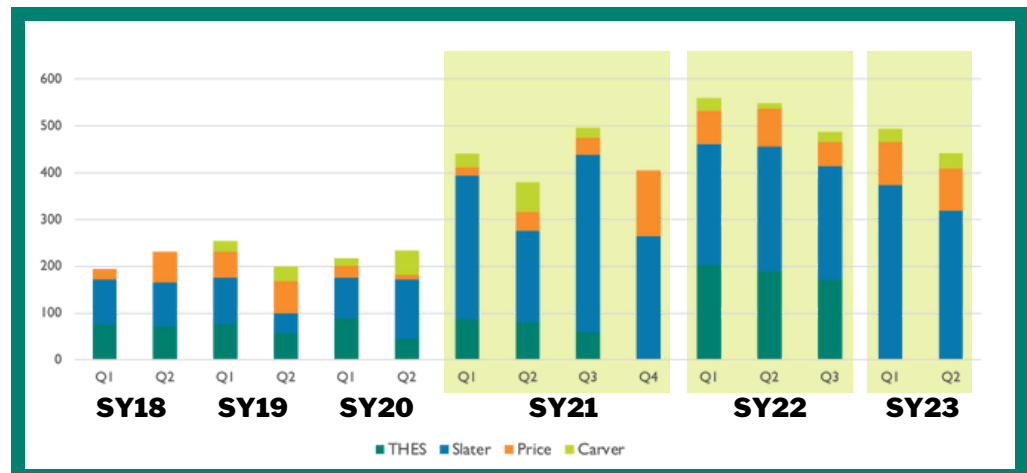
STABLE SCHOOLS *ENGAGED FAMILIES*

DOUBLED CAREGIVER ENGAGEMENT

Caregiver attendance at parent-teacher conferences has more than doubled since each school's baseline.

SUSPENSIONS

With an intentional focus on restorative justice, we reduced out-of-school suspensions by 40% across all four schools prior to the pandemic.



SUSPENSION ALTERNATIVE

Wildcat University, Price Middle School's alternative to suspension program, provides positive, hands-on experiences within school instead of out of school suspension.



SUSPENSION PREVENTION

We offer a **Therapeutic Drumming Program** and partnership with **Bearings Bike Shop** to provide alternative programming for students who are at risk for suspensions.



**UNPRECEDENTED
EQUITY-BASED
SUPPORT**

STUDENT & FAMILY *WRAPAROUNDS*



HOUSING SUPPORT

418 families
represented in
housing disputes

Legal Services: **Atlanta Volunteer Lawyers Foundation** has represented **418** families (with 1,016 children) in housing-related disputes, including **128** instances of threatened foreclosure and **379** instances of neglected repairs.

Homelessness Prevention: In partnership with **AVLF** and **Partners for Home**, PBSA provided **\$182,000** in direct rental/utility assistance to PBSA families to prevent eviction and homelessness.



ECONOMIC MOBILITY

Business Support: **Start:ME**, an incubator for small business start ups, supports new or expanded businesses in the Carver Cluster.

77 new or expanded
businesses supported by
Start:ME in the Carver
Cluster since 2017

5 PBSA caregivers
participated in Start:ME
to support their
businesses since 2017

Down Payment Assistance: Through a partnership with **FCS**, PBSA staff can qualify for down payment assistance to purchase homes near their schools.



MENTAL HEALTH

571

students have received free
mental health and counseling
sessions from Chris 180 since
2016

2,533

PBSA staff took part in at least
one of 185 trauma-informed
teacher trainings by Chris 180
since 2016

SEL Support: **CHRIS 180** therapists work on site and provide services such as individual and group counseling, behavior support, skill building, and staff training on trauma-informed care.

PBSA has invested more than

\$20 MILLION

in equity-based student and family support
programming since 2016.



PRE-K WITH PURPOSE

Slater prepares young scholars for success in elementary school with a free, high quality PreK program with fun, engaging teachers.



367

students served in Pre-K since the 2016-17 school year

18

Pre-K classes operated since the 2016-2017 school year

AFTER SCHOOL PROGRAMS

200

students participate in free after school programming through our partnership with Boys & Girls Club of Greater Atlanta.

URBAN AG PROGRAM

We offer a unique urban agriculture program across our schools. Price Middle School's farm and Slater's environmental science garden provide students with hands-on agricultural knowledge and experience growing their own food. We also feed our families and community through partnerships with the [Urban Recipe Food Coop](#), the [Women's Transitional Center](#), and [The Paideia School](#).



2,000

pounds of fresh produce

110

middle school students received GA standards-based, farm-related, literacy rich lessons

3,000+

hours of hands-on agriculture based instruction

100

families fed

176

elementary students received GA standards-based, farm-related, literacy rich lessons

100

fruit-bearing trees planted

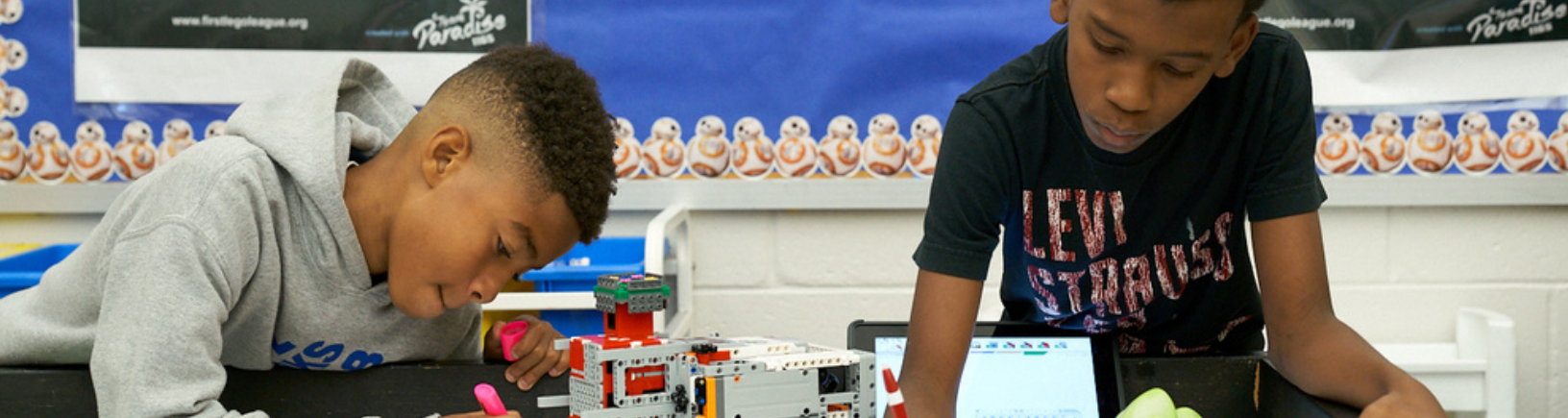
NUTRITION PROGRAM

Price students used Project-Based Learning to make a case for improvements to the school's food program. This sparked system-wide change and the launch of a new PBSA Nutrition Program, resulting in a huge increase in students who opt in to school breakfasts and lunches.

SUMMER PROGRAMS

250

elementary and middle school students participate in summer programming through our partnership with Horizons.



HIGH QUALITY *INSTRUCTION*

RIGOROUS INSTRUCTION

Coursework is intellectually rigorous and engaging for all of our students, offering project-based learning, advanced placement (AP) courses, a STEAM curriculum, small group instruction, Saturday school, and targeted interventions.

INNOVATIVE ENRICHMENTS

With enrichments like band, dance, chess, sports, art and robotics, our schools are places where scholars can explore a variety of subjects to discover their full potential and learn what they truly love to do.

ADVANCED PATHWAYS

We launched Advanced Pathways, a program that places students in advanced courses as early as 5th grade. Students are challenged intellectually and engaged in extracurricular activities. Advanced Pathways scholars have the opportunity to go on an annual trip, all expenses paid. This year's cohorts are going to NYC, Boston and Costa Rica.

7

Advanced Placement courses
(6 added since PBSA)

200+

receive reading intervention support through our partnership with The Schenck School per year.

P-TECH CARVER STEAM

Carver STEAM is the only high school in Atlanta to offer P-TECH, a free program from IBM that equips students with an associate degree and the technical skills to start careers after graduation.

COLLEGE & CAREER READINESS

Our robust college and career readiness program prepares scholars for life after high school.

graduation rate increased by

10.3

percentage points

PROJECT-BASED LEARNING

PBL EXAMPLES:

Price Chess: The Wildcat chess team headed to the national championship tournament three years in a row (not counting the pandemic) and placed every time.

Urban Agriculture Program:

Price Middle School's farm and Slater's environmental science garden provide students with hands-on agricultural knowledge and experience growing their own food.

Nutrition Program: An example of PBL in action is when students at Price voiced concerns about the school's food program. Their PBL project sparked system wide change that resulted in new menus and a new nutritional program.



OUR *MODEL*

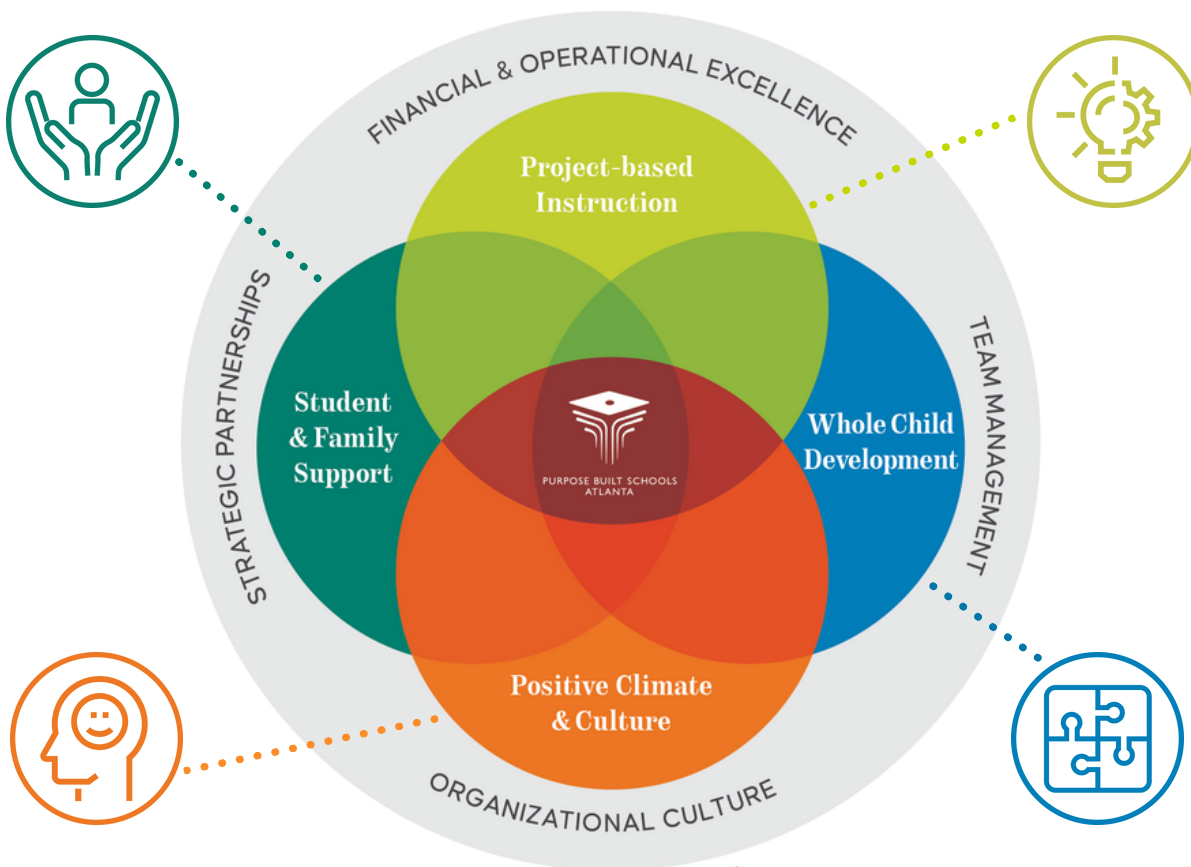
By combining the best of traditional public schools with the best of charter schools, we offer a proven model designed to put all students on a trajectory for success through college and in their careers.

STUDENT & FAMILY SUPPORT

Our schools and communities are stronger together, and we build bridges to parents, students and stakeholders.

PROJECT-BASED INSTRUCTION

A rigorous, culturally relevant curriculum helps students love learning and achieve their potential.



POSITIVE CLIMATE & CULTURE

Our students come to us with unlimited potential, and we are committed to helping them unlock that potential.

WHOLE CHILD DEVELOPMENT

We believe in a holistic approach, with enrichment opportunities, social-emotional learning, and wraparound supports alongside relevant and authentic project-based instruction.



MISSION

We cultivate students' skills and agency in pursuit of their unlimited potential. We do this through authentic and culturally relevant project-based instruction alongside enrichment, a safe and positive climate and culture, and student and family supports.

VISION

We graduate empowered change agents who create positive, long-lasting impact in their communities.

LEADERSHIP

Greg Giornelli
President

Dr. Nikkita Warfield
Chief Academic Officer

Jonathan Tugman
Chief Operating Officer

Karen Amos
Chief Financial Officer

Jovan Miles
Principal, Slater Elementary School

Luqman Abdur-Rahman
Principal, Price Middle School

Andrew Fuller
Principal, Carver STEAM Academy

BOARD

Cheryl Lomax
Board Chair

Shirley Franklin
Board Member

Greg Giornelli
Board Member

Ingrid Saunders-Jones
Board Member

Cynthia Kuhlman
Board Member

Sean Brazier
Board Member



PURPOSE
BUILT
SCHOOLS
ATLANTA

purposebuiltschoolsatlanta.org